

# ASAP

## Agro-silvo-pastoral systems in West Africa



- Support stakeholders in the agro-ecological transition
- Exploration of practices, cycles and transitions in agro-sylvopastoral systems
- Co-design innovative agro-ecological systems with participatory approaches

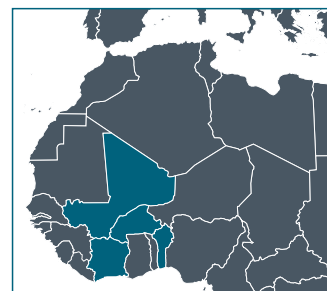
A platform in partnership for research and training (dP in French) is a long-term strategic alliance made up of a critical mass of partners and researchers around a shared program and portfolio of projects. Managed collectively, the Platform is open to members of civil society to facilitate its impact and also interacts with public policy decision makers in order to generate changes and transformations.



Agro-silvo-pastoral family farming represents a vast majority of farming systems in West Africa, as such, they are a significant lever for development. They are also facing multiple demographic, economic and climatic changes and their productivity is not increasing fast enough to meet an increasing demand. Intensification according to the "green revolution" paradigm has shown its potential to address this challenge, but it exposes farmers and the environment to a range of risks and degradation processes. Participatory research allows designing more productive and resilient mixed crop-livestock systems based on the principles of ecological intensification.

### ASAP IN A NUTSHELL

- Created in 2005
- 4 West African countries
- 8 members
- 84 researchers and teachers
- 18 students (masters, PhD)
- 12 ongoing projects
- 13 scientific publications / year



### MEMBERS

	<b>Benin</b> Institut national des recherches agricoles du Bénin (Inrab) <a href="http://www.inrab.org">www.inrab.org</a>
	<b>Burkina Faso</b> Centre international de recherche-développement sur l'élevage en zone subhumide (Cirdes) <a href="http://www.cirdes.org">www.cirdes.org</a>
	Institut de l'environnement et de recherches agricoles (Inera) <a href="http://www.inera.bf">www.inera.bf</a>
	Université polytechnique de Bobo-Dioulasso : Institut de développement rural (UPB/IDR) <a href="http://www.univ-bobo.gov.bf">www.univ-bobo.gov.bf</a>
	Centre d'Etudes, de Documentation et de Recherche économiques et sociales (CEDRES)
	<b>Côte d'Ivoire</b> Université Peleforo Gon Coulibaly (UPGC) <a href="http://www.univ-pgc.edu.ci">www.univ-pgc.edu.ci</a>
	<b>Mali</b> Rural Economy Institute (IER) <a href="http://www.ier.ml">www.ier.ml</a>
	<b>France</b> Centre de coopération Internationale en Recherche Agronomique pour le Développement <a href="http://www.cirad.fr">www.cirad.fr</a>

### SOME PARTNERS

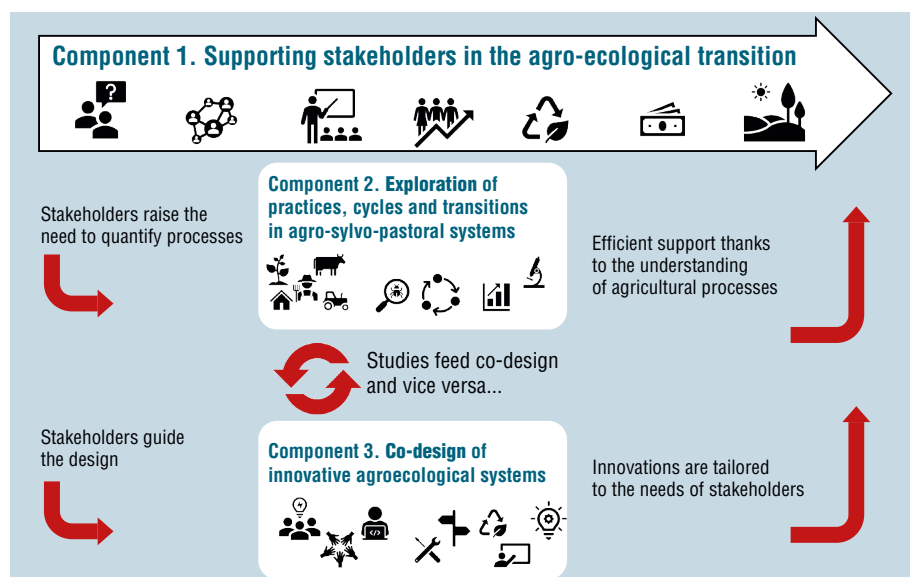
**Burkina-Faso :** University of Ouagadougou I & II, University Dédougou, IRSAT/CNRST, University Joseph Ki-Zerbo, UPPA Houet Union Provinciale des Professionnels Agricoles.

**Mali :** University of Ségou.

**Benin :** University of Abomey-Calavi, Ministry of Agriculture, Livestock and Fisheries.

**France :** Montpellier SupAgro, Agropolis International.

**Senegal :** Senegalese Institute of Agricultural Research (ISRA).



## ■ EXPERIENCE AND TECHNICAL KNOWLEDGE

- Analysis of mixed crop-livestock systems evolution.
- Analysis of agricultural advisory services, governance and territorial changes.
- Modelling biomass and nutrient flows at farm and landscape scale.
- Co-design of technical and organizational innovations.
- Capacity building of stakeholders and support for innovation.
- Multi-criteria evaluation methods and ex-ante assessment of innovations introduction.
- Feasibility study, management and project evaluation.

## ■ BENEFICIARIES

**Rural farming households** will be able to sustainably increase their production through innovations based on the principles of ecological intensification.

**Farmers' organizations and development agencies, policy makers and local communities** will benefit from new knowledge and tools to support a more intensive and ecological agriculture.

**Students, future managers and researchers** will strengthen their skills in all disciplines and fields relevant for the design of these systems.

The **scientific partners** will increase their scientific reputation through publications in international journals.



## ■ TRAINING COURSES FUELLED BY THE RESULTS OF RESEARCH

In addition to research activities, the dP encourages researchers involvement in initial training courses through seminars and training modules: Agroecology Days, Master Agrinovia, Peleforo Gon Coulibaly University, Montpellier SupAgro... It also mobilizes its human and financial capacities for tailored training sessions to meet the needs of dP researchers: data collection, data analysis scientific writing, bibliography management...



## ■ SOME PROJECTS IN PROGRESS

**Project to support the Agro-ecological Transition in the Agro-ecological areas in Benin (TAZCO)**, 2020 - 2023, funded by the Agence Française de Développement (AFD)

The project aims to support farmers in northern Benin in the adoption of more sustainable cropping practices to contribute to the increase of their income in the long term.

**Project to support the Agro-Ecological Transition in the cotton-growing regions of Mali (AgrEco)**, 2020 - 2023, funded by the Agence Française de Développement (AFD)

The Research & Development component of the AgrEco project aims to co-design efficient and more sustainable production techniques and strategies, from the plot to the territory, to support the agro-ecological transition of production systems in the cotton-growing regions of Mali.

**Fostering Agroecological Intensification for Improving farmers' Resilience in Sahel (FAIR Sahel)**, Senegal, Burkina, Mali, 2020 - 2024, funded by EU and AFD

The project includes the following components:

- Diagnosis, identification of innovation groups, and implementation of partnership or collaboration mechanisms;
- Co-design and adaptation of innovative systems;
- Creation of good conditions for agroecological intensification;
- Exchange of experiences in agroecological intensification, training and dissemination;
- Project management, coordination, monitoring and evaluation.

**Carbon sequestration and greenhouse gas emissions in (agro) sylvopastoral ecosystems in the Sahelian CILSS states (CaSECS)**, Senegal, Burkina, Niger, 2020 - 2024, funded by EU

The project aims to:

- Improve Carbon Footprint assessment of agro-sylvopastoral ecosystems in Sahel in order to better quantify their impacts on climate change for the development of livestock policies adapted to the Sahel;
- Strengthen the capacities of the actors involved;
- Support changes in practices and policies.

**Improving Access to Agricultural Innovations for Agroecological Transition (AMINATA) / Accelerating the innovation dynamics in agriculture through the strengthening of Innovation Support Services (CDAIS-ACCESS)**, Mali, 2021 - 2025, funded by EU

The project aims to make agricultural innovation systems more efficient and sustainable by better responding to the needs of producers and consumers; and by considering the various capacity building issues, at the individual and collective levels, in their technical, organizational and operational dimensions.